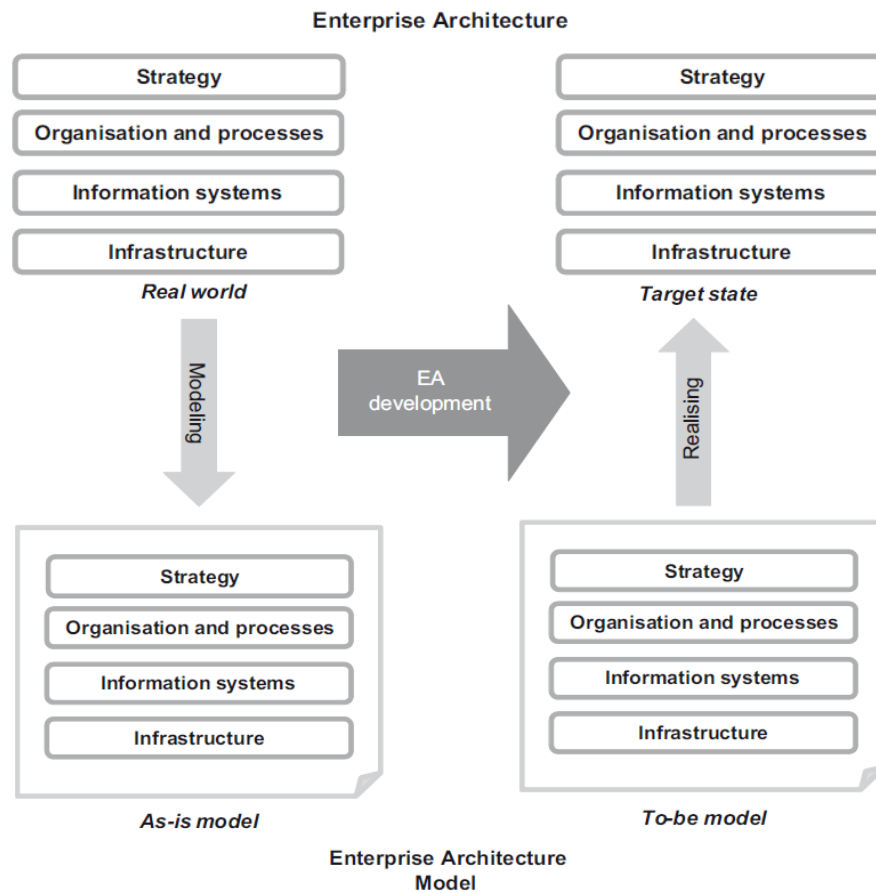


# *EAM Practice: The Role of Modeling*

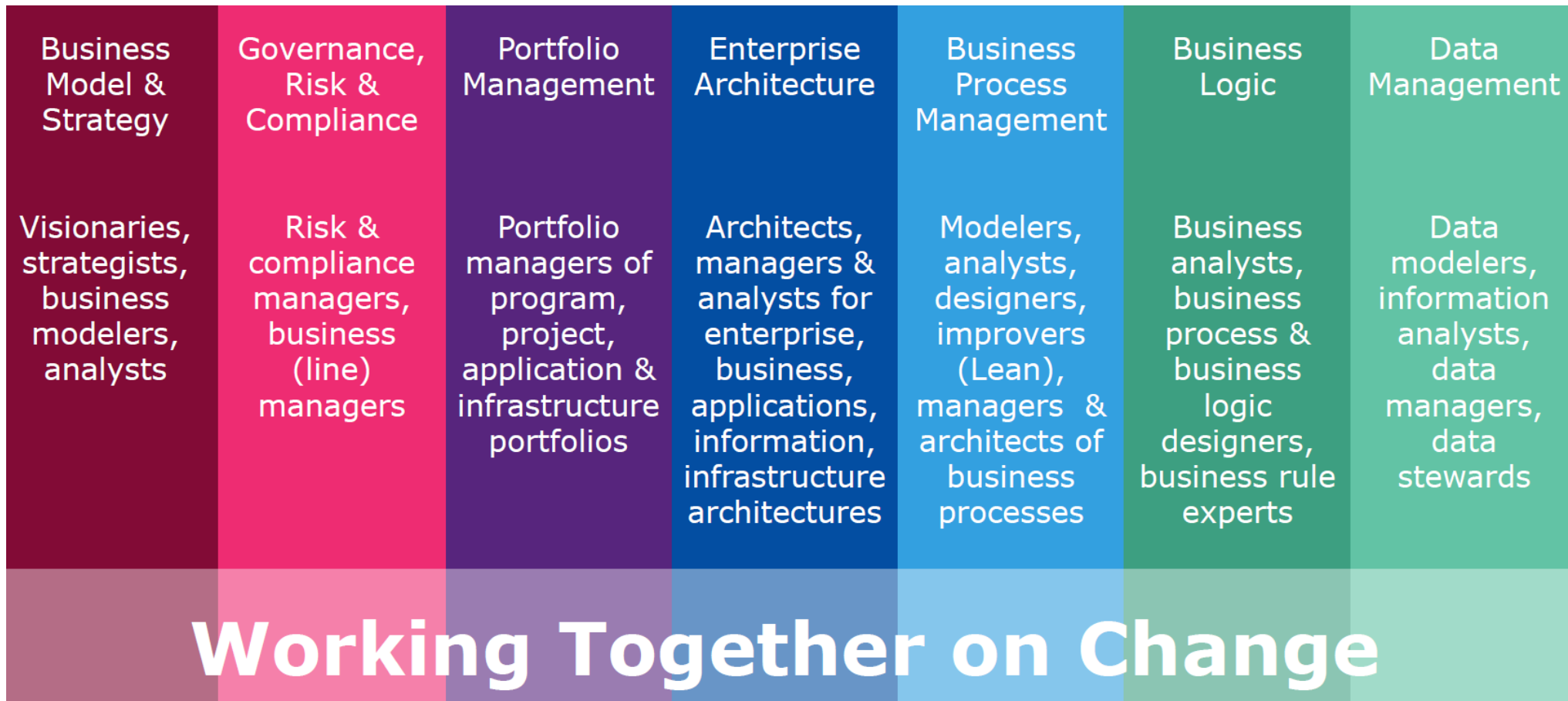
*Knut Hinkelmann*



# Managing Change



# Practice of Enterprise Architecture Management



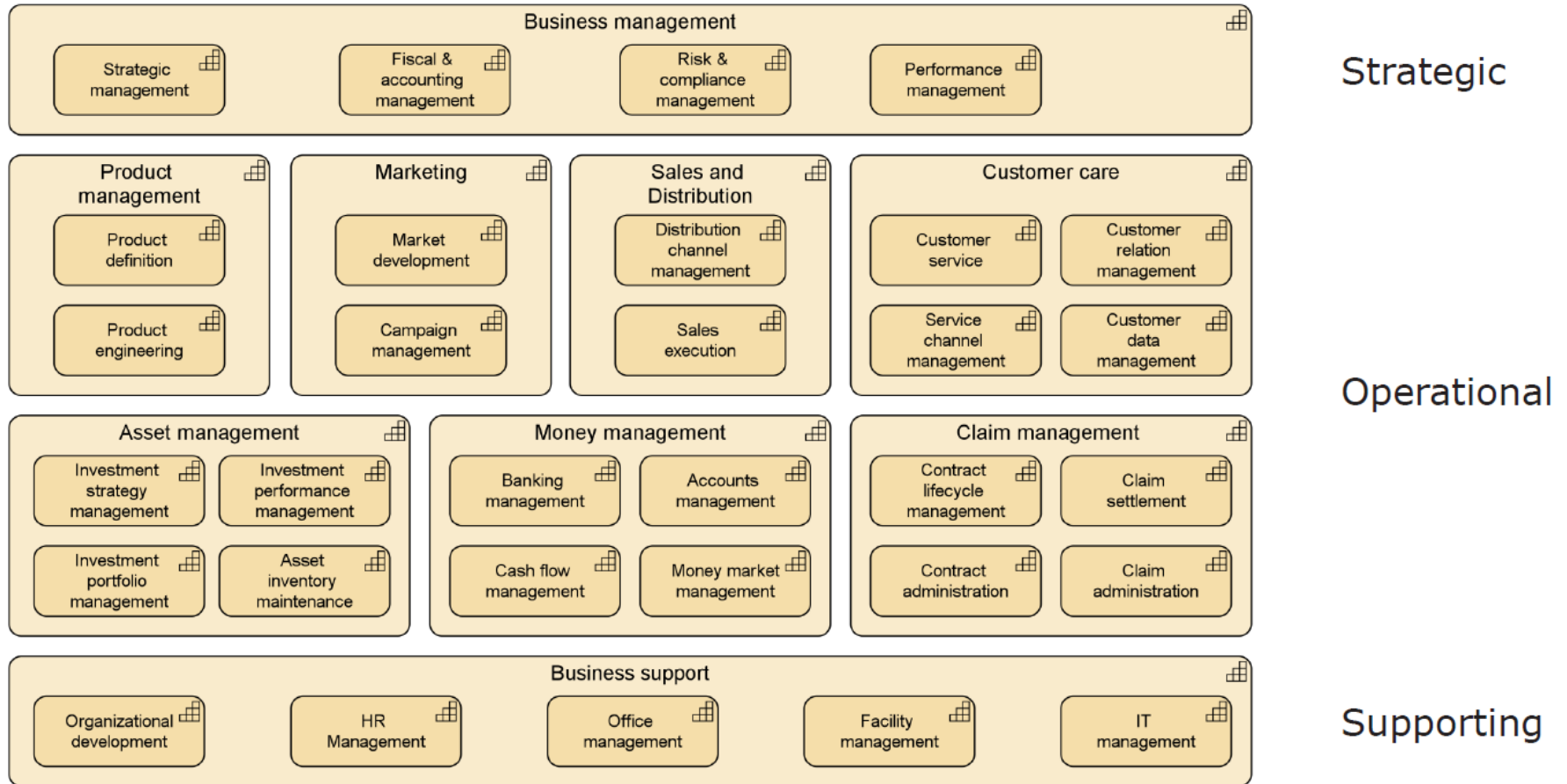
## Use Models ...

- ... to create transparency, coherence and clarity
- ... check for compliance
- ... analyze risks
- ... facilitate alignment between decisions

# Capability-based planning

- create **autonomous business capabilities** that can evolve on their own
- Know your strengths: at which capabilities do you excel?
- Investigate new business models, based on your current or future capabilities

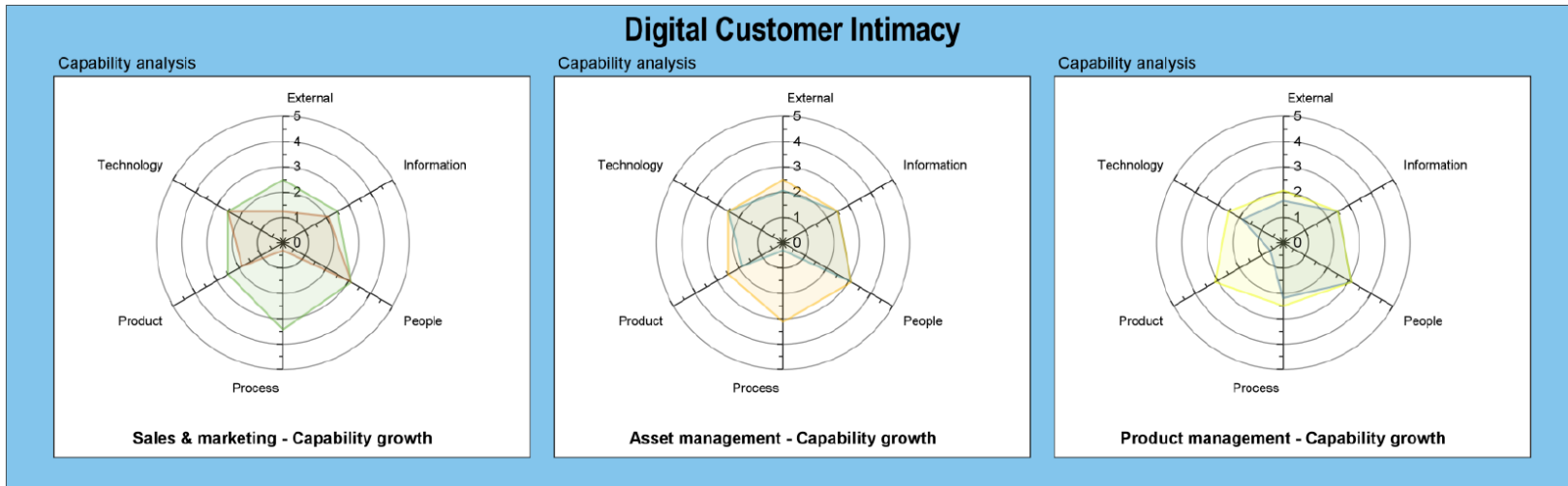
# Capability Map



*Inspired by Panorama360 reference model*



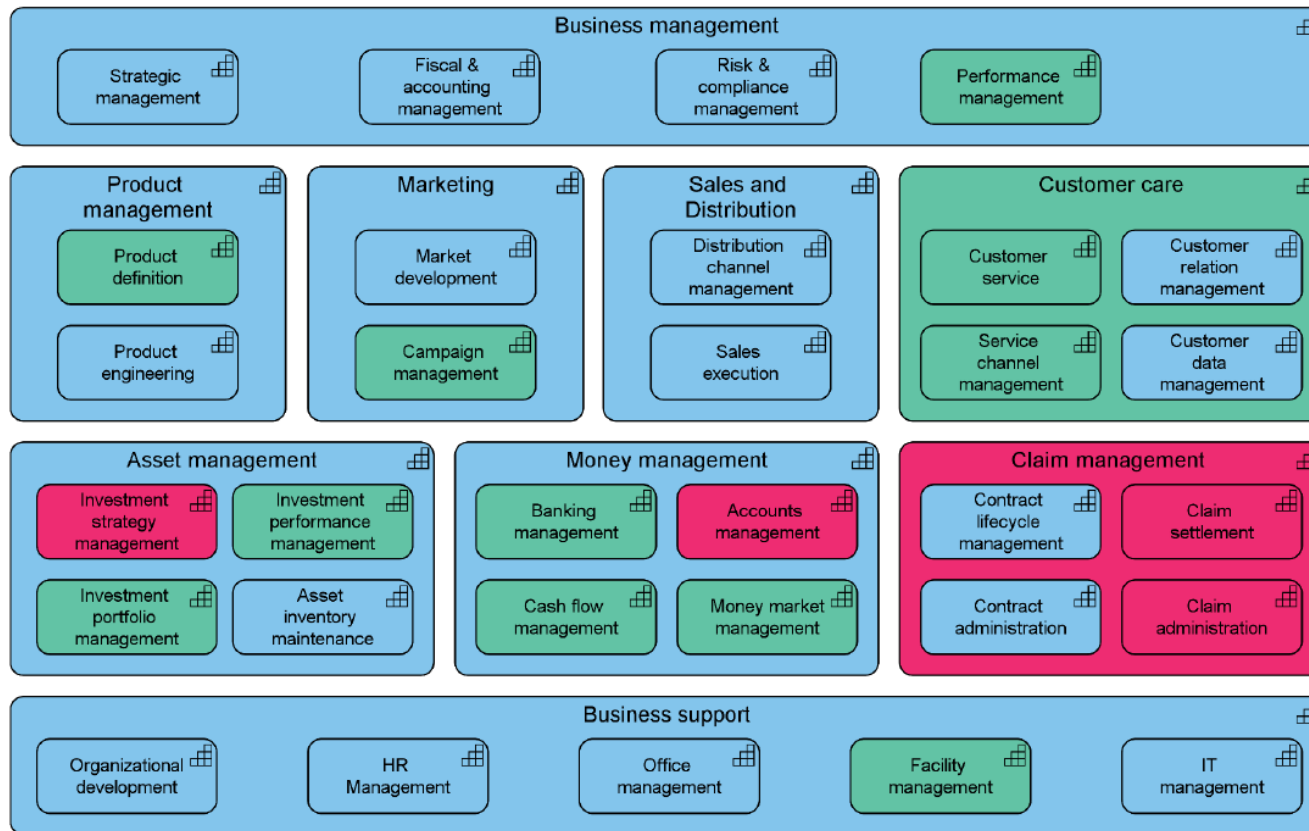
# Capability Analysis



Analyze and plan the evolution of capabilities along different dimensions



# Capability Heat Map



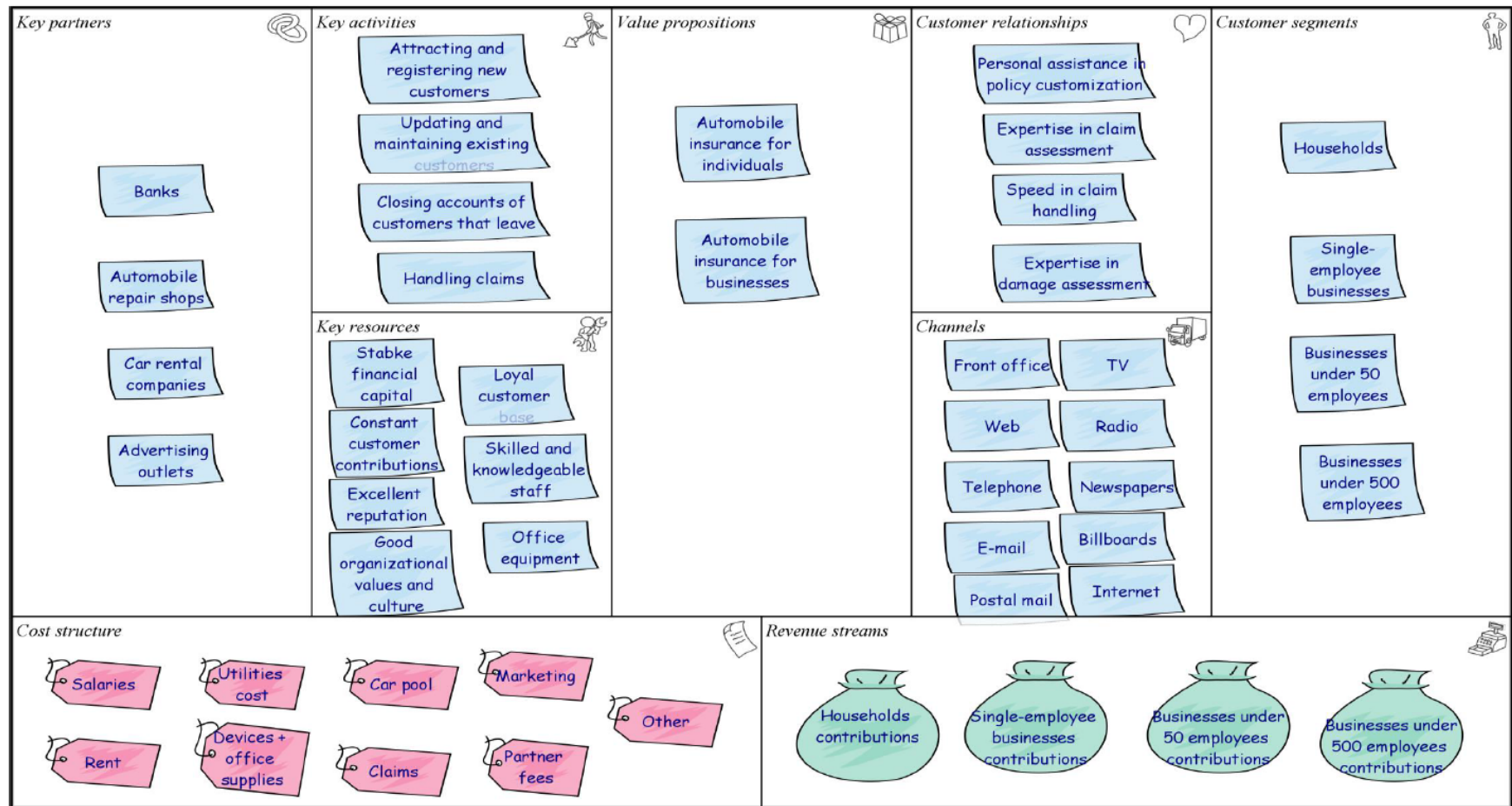
## Efficiency

- Below average
- Average
- Above average





# Strategy: Business Model Canvas



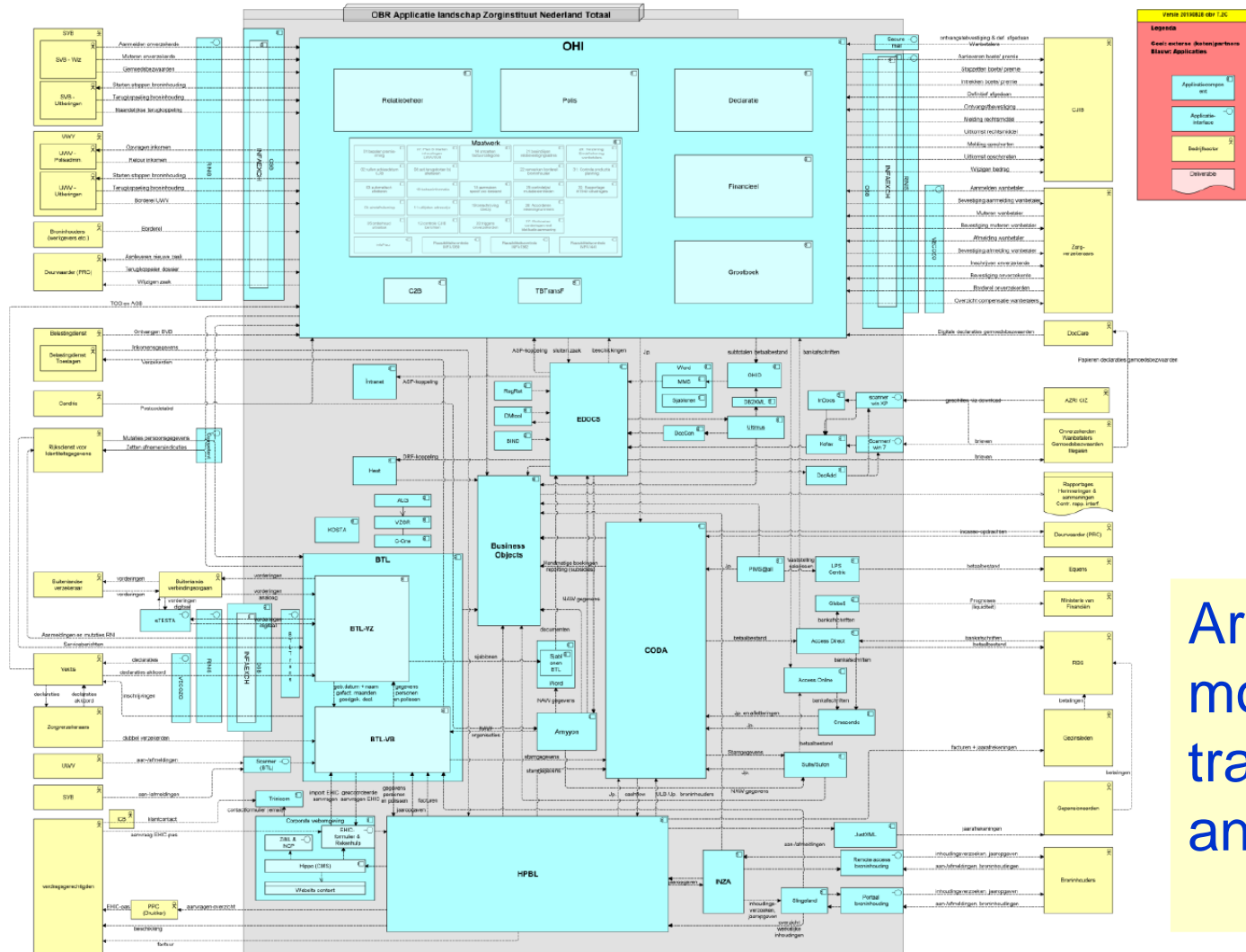
(Lankhorst & Matthijssen 2016)



# Decision Making

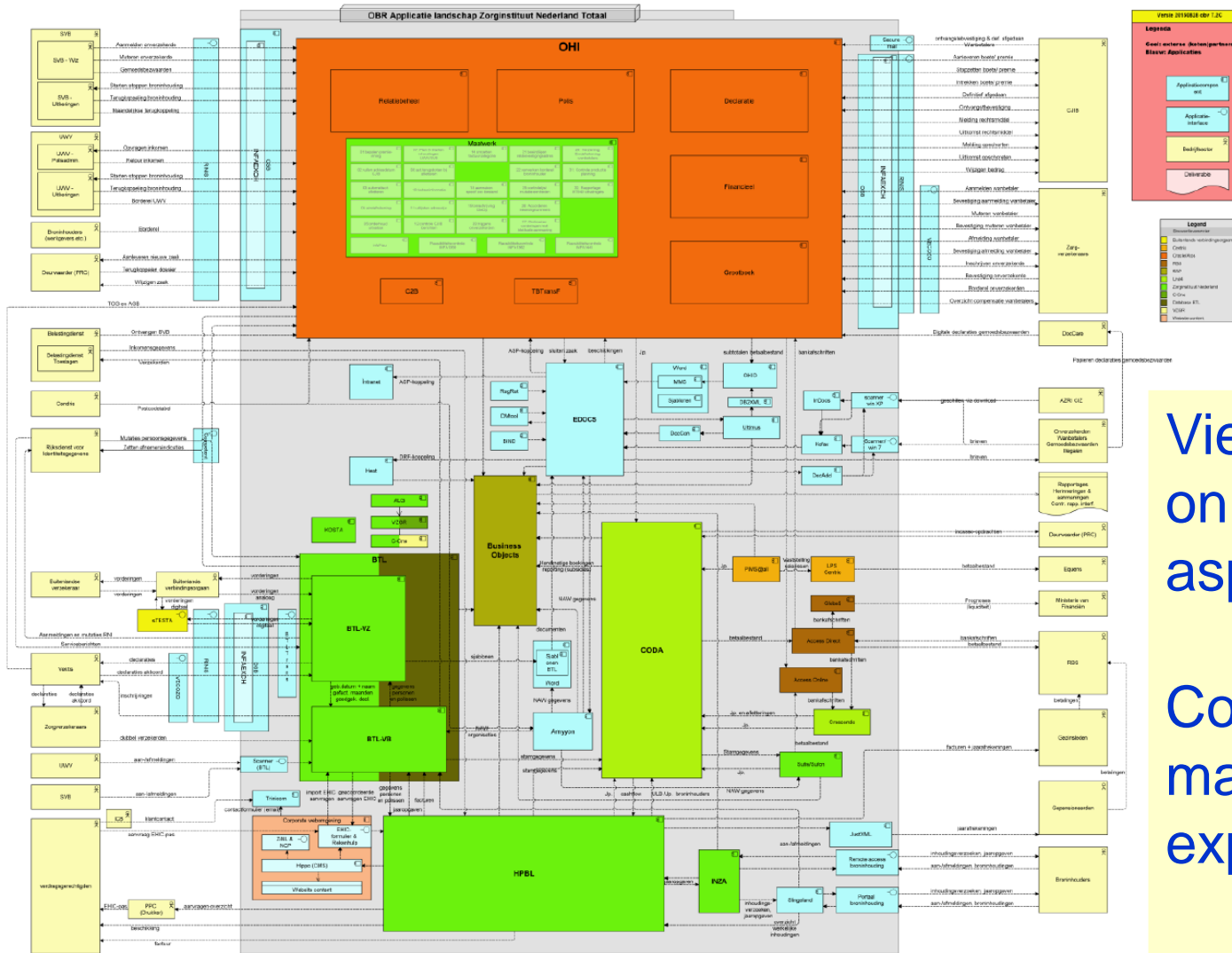
- Problem: **What will be the effects of decisions?**
- Decisions need to be made at **all levels** of the organization
- **Align** long-term, strategic decisions and local, day-to-day improvements
- Know the facts: create a **single source of truth**
- **Provide** people with **timely and accurate information** they need to make decisions
  - ◆ Models
  - ◆ Targeted dashboards

# Modelling



Architecture models provide transparency and insight

# Get a Grip on Complexity

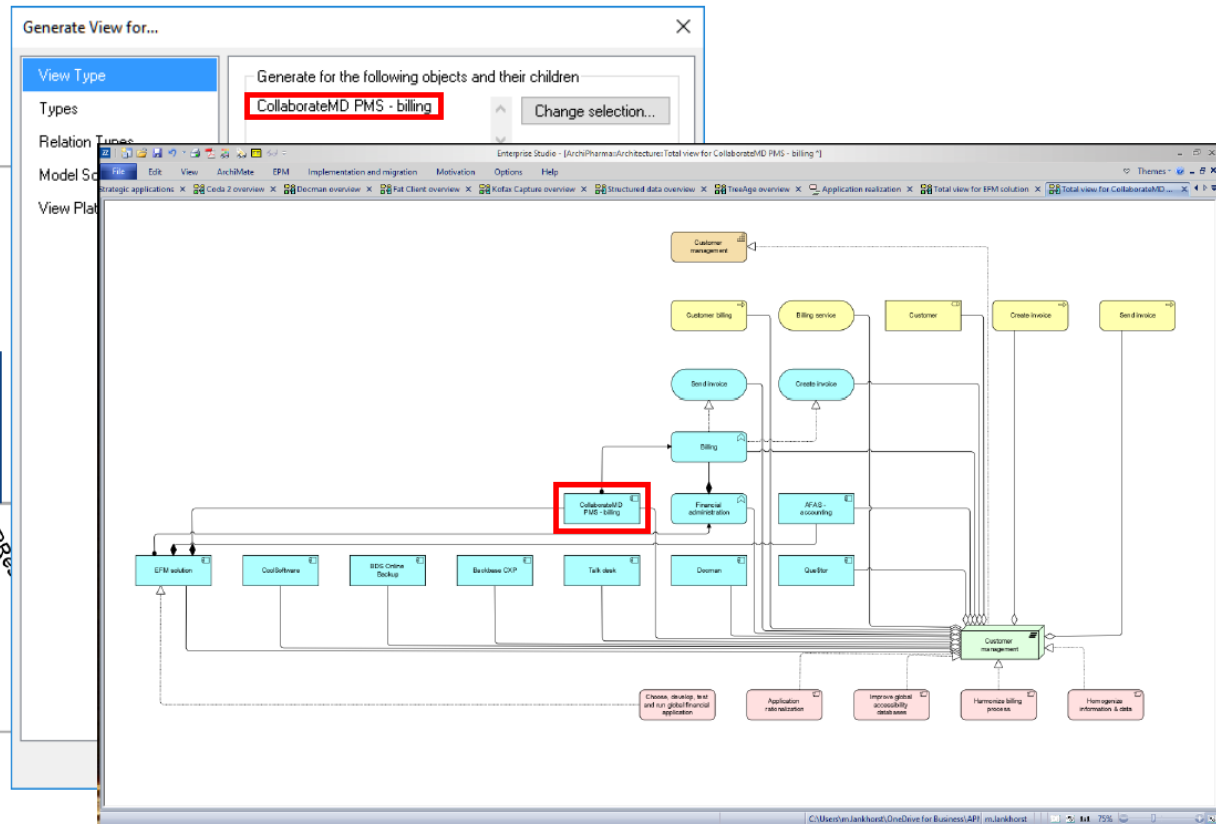
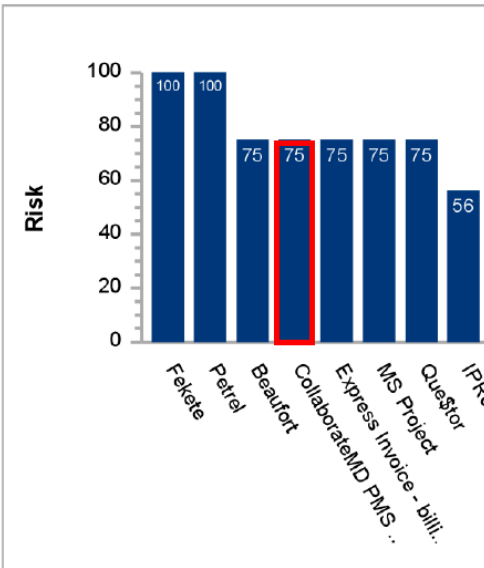


Views show only relevant aspects

Colour views make relations explicit

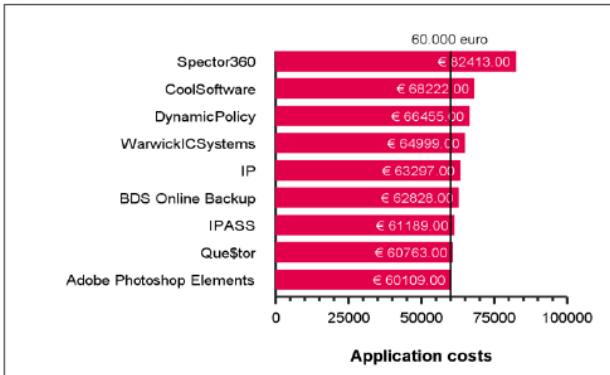
# Impact of Change

Risk overview

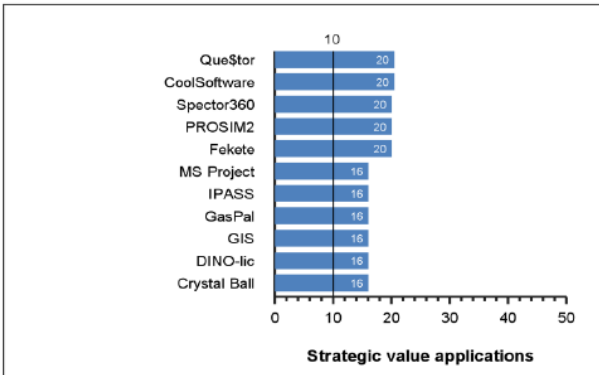


# Application Portfolio Dashboard

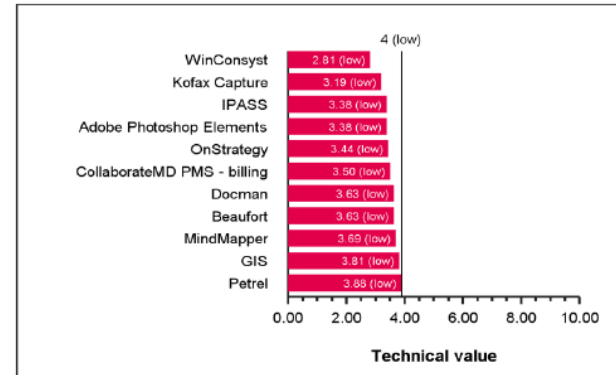
Applications with the highest costs



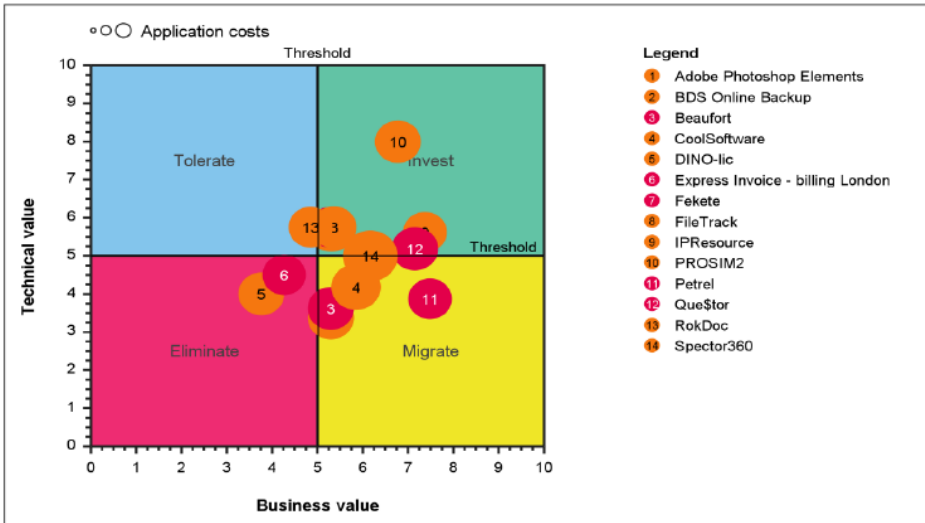
Applications with the highest strategic value



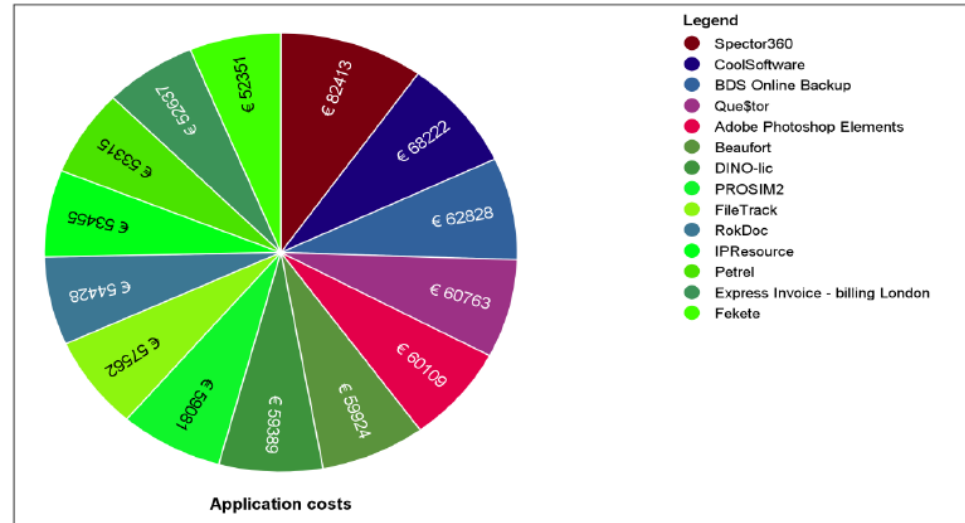
Applications with the least technical value



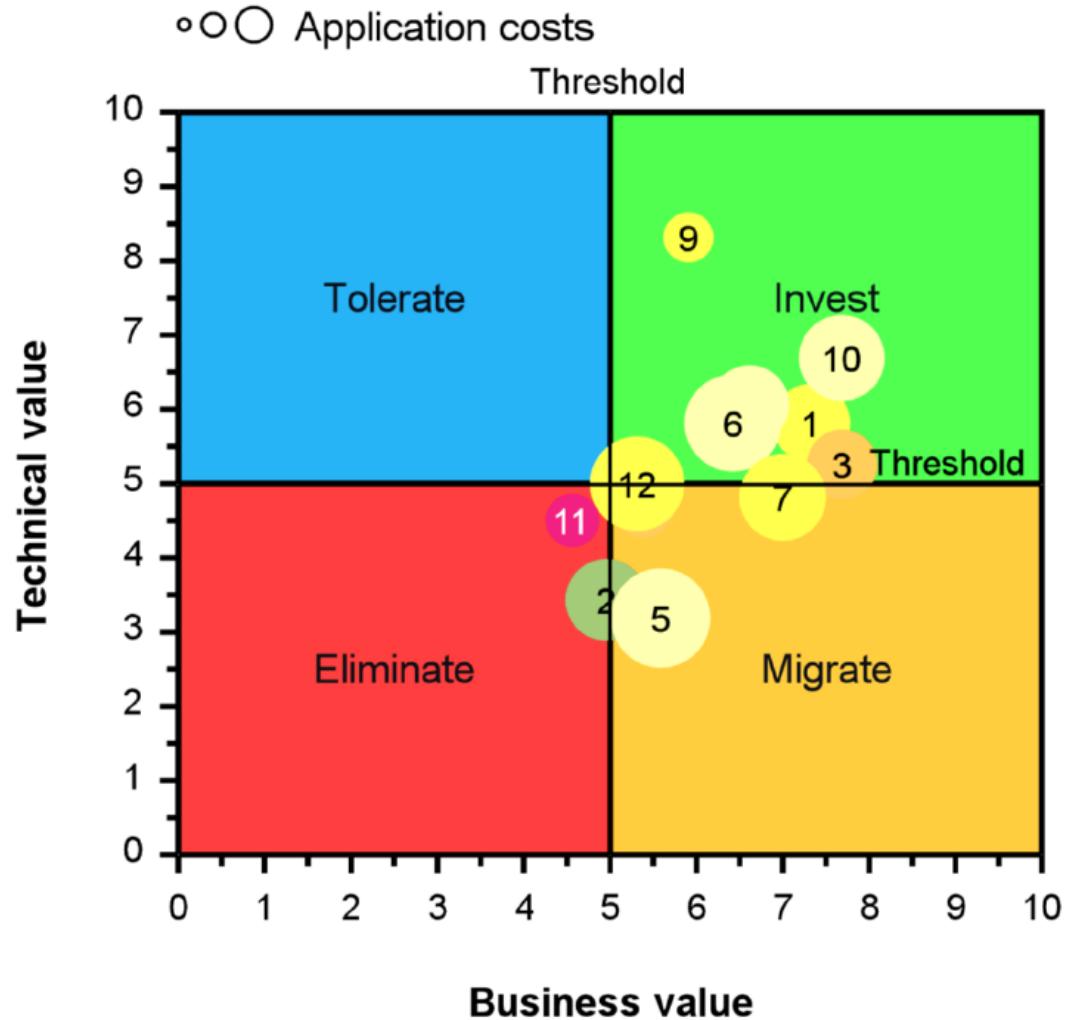
TIME analysis



Cost overview



# Application Lifecycle Analysis



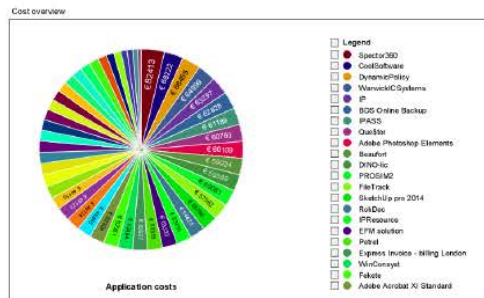
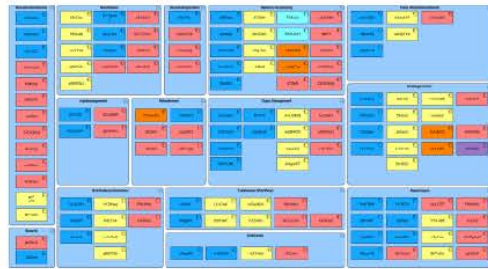
# IT Landscape With Lifecycle Advice



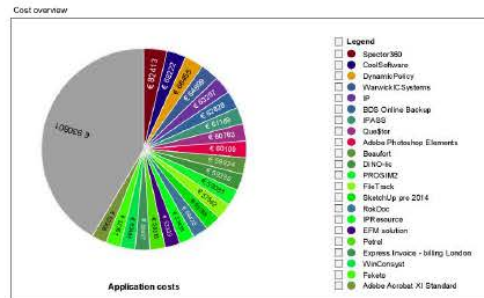
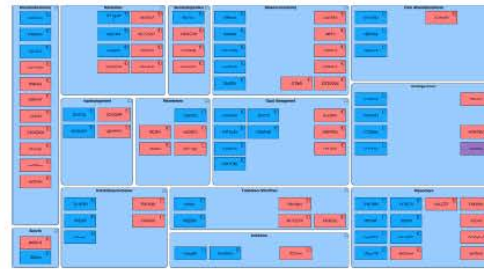


# Development over Time

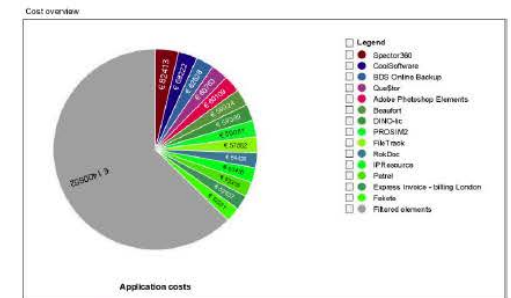
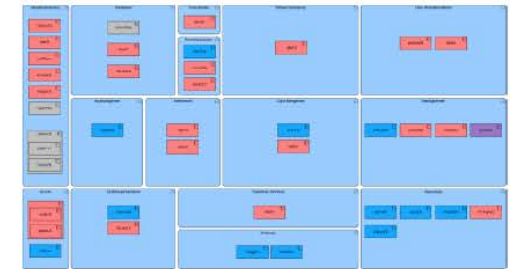
2013



2015

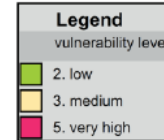
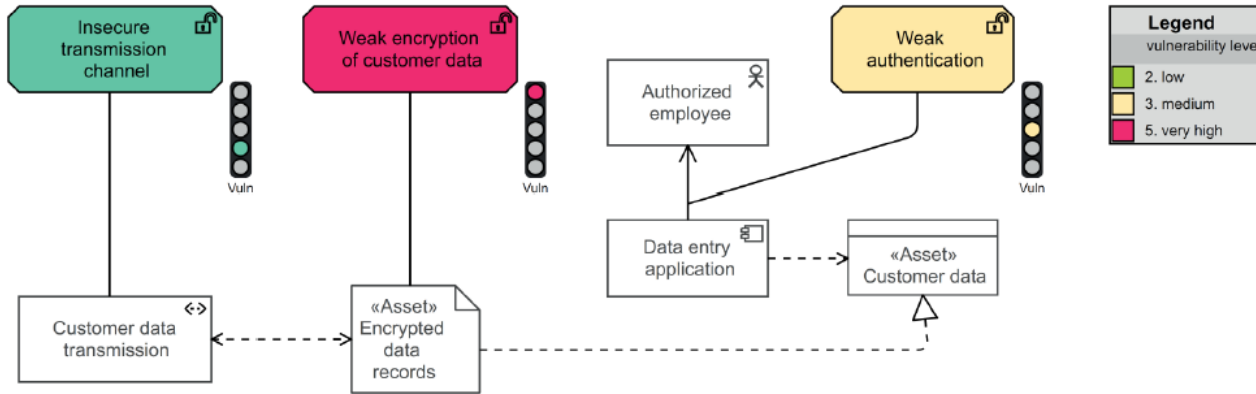


2018

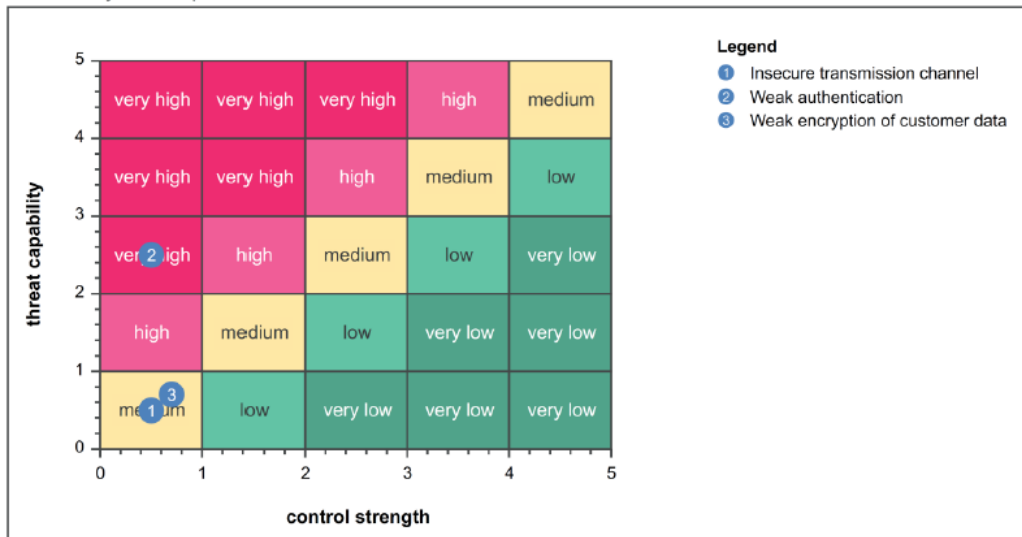


**Cost reduction**

# Cyber Risk Analysis



Vulnerability Heat Map



Identify vulnerabilities and threats, and define mitigating measures to control risks

